


A U S T R A L I A N  
**ROD & Custom**

[www.partsforhotrods.com.au](http://www.partsforhotrods.com.au)

 **07 5522 9757**

[sales@austrodandcustom.com.au](mailto:sales@austrodandcustom.com.au)

Shed 24, 30 Mudgeeraba Rd, Mudgeeraba QLD 4213

*Proud suppliers to premier car and  
body builders as well as the home  
car builder, with technical support  
to back our products!*



Australian owned



Established 15 years



Local support



Fast shipping



## STEERING COLUMNS, STEERING WHEELS & COMPONENTS



### ▲ ARC Retro 40's Collapsible Steering Columns – Engineer Approved with Report

Suit floor shift, indicators and hazards built in. Made in 29", 31", 33" sizes with chrome, black or milled stainless finish.

### ▼ Billet Steering Wheels

Huge range of more than 25 designs of billet steering wheels available in 14" and 15". Most wheels available in polished or anodized black finish.



### ▼ Horn Buttons

Small, Large, Banjo style  
Polished or Black Anodized



### ▼ Steering Wheel Adapters

GM '67-'94, Ford Mustang/  
Falcon, 3, 6 and 9 bolt.



### ▲ ARC 5 Position Tilt Collapsible Steering Columns – Engineer Approved with Report

Suit floor shift or 3-4 Speed column shift auto. Five position tilt with indicators and hazards built in. Made in 28", 30", 32" sizes with chrome, black or milled stainless finish.

### ► ARC Universal Joints

Available in black or polished stainless steel.

¾"DD-¾"DD  
1"DD-¾"DD  
¾" DD-17mmDD  
¾"DD-9/16 26 spline  
¾"DD-9/16 36 spline  
¾"DD-5/8 36 spline  
¾"DD-3/4" 36 spline  
¾"DD-3/4" 48 spline  
¾"DD – ¾" 30 spline  
¾"DD-13/16" 36 spline  
¾"DD-1" 48 spline  
1"DD-3/4" double uni joint  
¾"DD-3/4"DD double uni joint



### ► Steering Support Bearings

### ► ¾"DD Steering Shaft

Available in polished stainless or zinc coat, lengths 12", 24", 36".

### ► ARC Steering Column Mounts

Billet upper steering column mounts in standard or collapsible breakaway design. Sizes to suit 1.75", 2" and 2.25" columns in 2.5", 3.5" or 4.5" drops.

### ► Lower Column Swivel Mounts

Available to suit 1.75" and 2" columns.



## CHASSIS, FRONT AND REAR END, SUSPENSION COMPONENTS



### ◀ ARC Independent Front Suspension

ARC IFS Front End made for 1928-1934 Ford or similar vehicles. Features include polished stainless upper and lower control arms w/ camber adjustment, adjustable coil over shock absorbers w/ damper adjustment and rack and pinion steering w/ manual or power steering options.

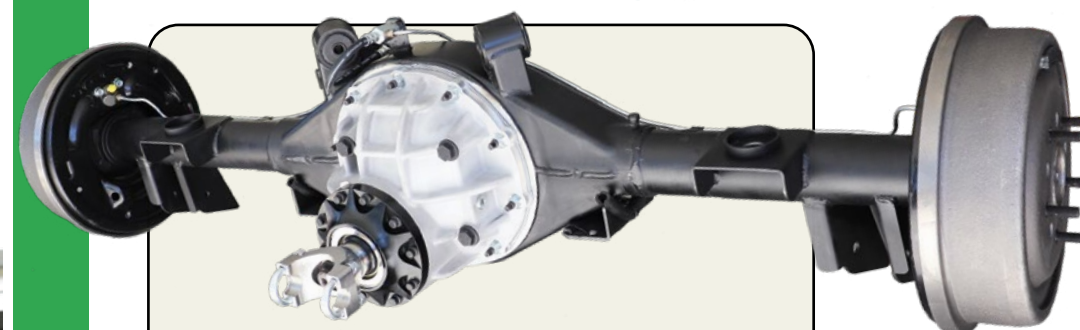
### ◀ ARC Traditional I-Beam Front End for 1928-1934 Fords

Complete I-beam front end with four bar or hairpin radius rods option. Components of front end can also be bought separately. Engineer Approved with reports.



### ▲ Adjustable Coil Over Shock Absorbers

Available in 13.5" or 14.5" with spring rates ranging 150lb-350lb.



### ▲ 9 Inch Diff Assembly - Supplied and Built to Any Stage!

9 inch diff assemblies for Ford Falcon and Mustang, Holden HK-T-G, Holden HQ-WB, LH-LX Torana, VB-VL Commodore, hot rods and pickups. We can supply individual components or build to any stage from housing and axles only to complete bolt in package. Includes 31 spline billet axles, disc or drum brakes, LSD diff centres. Get a quote today!



### ► ARC Performance Street Nodular Iron Case 9-Inch Diff Centre

Posi Traction four pinion clutch plate LSD, 1310 yoke, 28/31 spline, 3.0, 3.25, 3.5, 3.7, 3.89 ratios.

### ► ARC Performance Aluminium Case 9-Inch Diff Centre

True Trac LSD, 1350 yoke, available 28/31 spline 3.0, 3.25, 3.5, 3.7, 3.89, 4.11 ratios.





# WILWOOD BRAKE KITS AND COMPONENTS

**DISC BRAKES**  
**wilwood**

## ► Front Disc Brake Kits

- Front disc brake kit perfect easy upgrade and made to suit OEM spindles
- 4 & 6 Piston Forged Dynapro calipers with dust boot options To meet Aust Standards
- 11" & 12.19" Drilled and Slotted Rotors

### Kits to suit:

Holden HQ-WB  
Chev C10 Pickup 1963-1987  
Chev Bel Air/Impala 1959-1964  
Chev Camaro 1967-1969  
Chev Chevelle 1967-1972  
Chev El Camino 1964-1972  
Ford Falcon XW-XF  
Ford Mustang 1965-1969  
Mustang II IFS Spindle Front ends  
**MORE KITS FOR AUSSIE CARS COMING SOON!**



## ► Rear Disc Brake Kits

- Suit Ford 9 inch diffs with Small and Large Bearing axle ends
- 4-piston Forged Dynapro calipers with dust boot options to meet Aust Standards
- 11" or 12.19" Drilled and Slotted Rotors
- Featuring internal rotor parking brake assembly



## ► Adjustable Proportioning Valve

Offers front and rear line distribution with easy rear brake adjustment, black finish.

- Brake light switch with plug & wiring.
- Simplified install with bracket and pre-made lines available.



## ◀ Brake Tandem Aluminum Master Cylinders

Suit various different brake booster and pedal assembly set ups. Available in two bore sizes from 7/8" & 1"; and two finishes; ball burnished polished and black e-coat. Fits most mounting flanges and features outlet ports both sides, for multiple plumbing options.



**DISC BRAKES**  
**wilwood**



### Aluminium Tandem Master Cylinder, 1" Bore

- Bolts on to most aftermarket and OEM boosters.
- Suits mounting flanges 3.22" to 3.40".

### Compact Tandem Master Cylinder, 1" Bore

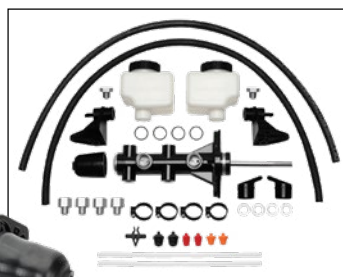
- Great for tight fit applications at only 166mm long.
- Perfect for Falcon and Mustang.

### Booster Delete Master Cylinder, 7/8" Bore

- Designed for a manual applications with no brake booster.
- Supplied with brake push rod to connect to pedal.

### Remote Reservoir Tandem Master Cylinder Kit, 7/8" or 1" Bore.

- Perfect for under-dash or under-floor brake pedal arrangements.
- Kit includes two 7 oz. fluid reservoirs, clamps, brackets and hoses.



# BRAKE KITS, BRAKE COMPONENTS & PEDAL ASSEMBLIES

## ► Brake Boosters and Master Cylinders

- Complete booster and master cylinder kits.
- Master cylinders available separately with cast iron or chrome alloy finish, 1" or 1-1/8" bore sizes.
- Brake booster available separately as 7" or 9" single diaphragm and 7" and 8" dual diaphragm. Chrome, zinc and black finish.
- Proportioning valve, adjustable
- GM booster and master kits.

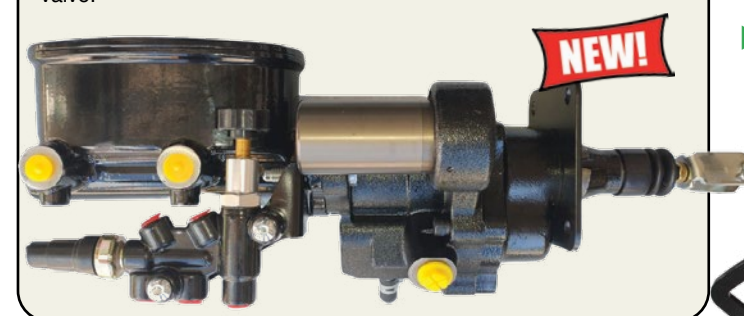


## ◀ Master Cylinders

- 1" bore, oval design, aluminium body.
- Chrome or black finish.

## ▼ Hydroboost Hydraulic Brake Assist System

Improved braking for vehicles with low vacuum. 1,800psi of brake pressure, driven off power steering pump, suits four-wheel discs. Includes 1-1/8" oval master cylinder and adjustable proportioning valve.



## ▼ Brake Kits

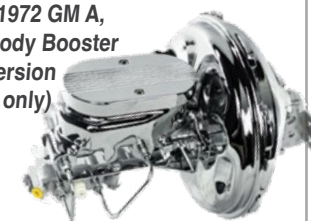
- 9 inch diff disc brake kit.
- 9 inch diff drum brake kit.
- Early Ford front disc brake kit.



Early Ford Disc Brake Kit



1964-1972 GM A, F, X Body Booster Conversion (Auto only)



'67-'72 Chevy C10 Booster Conversion (Auto only)



Firewall Mount

## ► Brake Pedal Assemblies

- Firewall mount.
- 90 degree under dash (Engineer approved, auto or manual).
- Under floor (auto or manual)



Under Floor Auto

Under Floor Manual

## ► Hand Brakes

- 11 Inch hand brake lever
- Chrome or black finish.
- Lever only or with cable kit (Cable kit available separately).
- Universal fit.



## ► Vertical Trans-Mount Hand Brake

- 11 inch ratchet style handbrake lever.
- Chrome or black finish.
- Universal fit.



## ◀ E-Stop Electronic Park Brake

Push button electronic emergency brake kit.



# WIRING KITS, WINDSCREEN WIPER KITS, POWER WINDOWS & SWITCHES

AUSTRALIAN  
**ROD & Custom**

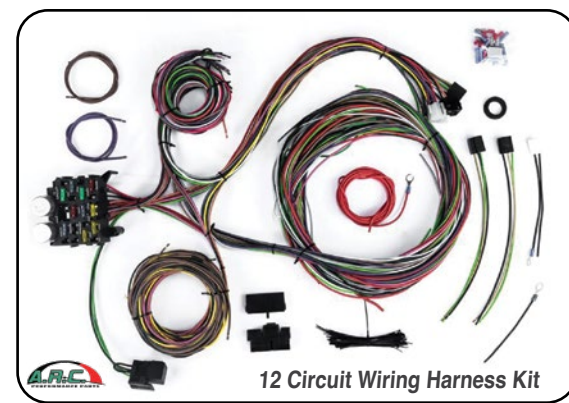
## ▼ ARC Eazy Wiring Harness Kits

From headlights to tail lights and everything in between! ARC Eazy Wiring harness kits utilise GXL125 high temp cross linker polyethylene jacketed wire, and each wire is labelled every 150mm. Ideal for the home builder!

- Includes pre-wired fuse panel with fuses and breaker.
- Headlight and dipper switches optional.
- Suit Chev, Ford, GM, hot rods and most custom applications.



**22 Circuit Wiring Harness Kit, w/ Headlight And Dimmer Switch**



**12 Circuit Wiring Harness Kit**

**12 Circuit Harness Kit  
Mini Fuse Box, Suit Hot  
Rod, Ford, GM, Mopar**

## ▼ Fuel Sender to Gauge Linking Module

Corrects the common problem on mismatched fuel tank senders with aftermarket gauges or vice versa. Allows any fuel sender to be used with any electronic fuel gauge. No need to change existing fuel tank senders or gauges when upgrading tanks or gauge clusters.



## ▼ Power Window Kits

Universal power window kits w/ Illuminated switches.

- Sold as pair.



## ▼ Windscreen Wiper Kits

- 12V Wiper motor, S/S arm and blade set.
- Two speed cable driven wiper kit w/ park function.



## ▼ Electric Window Crank Switch

Allows you to use your vehicle's original window crank handle to operate your power window. Rotate the window crank up or down 15 degrees to activate the switch to lower or raise your window

- Includes 5 different shaft inserts to fit all popular models
- Thin, billet aluminum housing for a clean installation in nearly any vehicle
- One kit per window.



## ▼ Assorted Switches

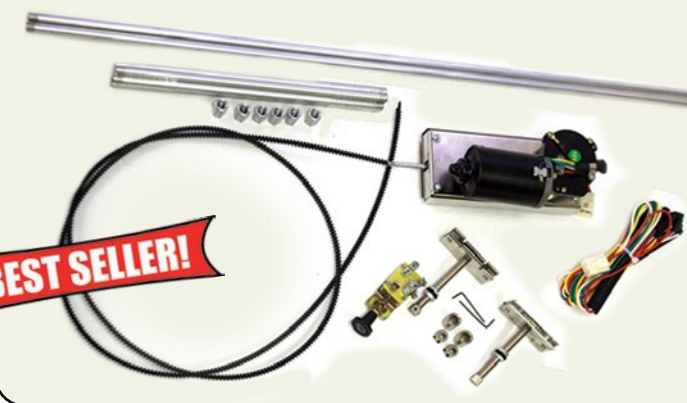
Headlights, ignition, wipers and floor mount hi-beam dimmer.



## ► ARC Remote Mount Cable Driven Windscreen Wiper Kits

ARC Performance cable driven wiper kit uses a remote mount wiper motor with cable drive and tubing to connect to gear driven wiper spindles. Perfect for hot rod or custom car project, or tight under-dash applications. Kit includes:

- 2-speed remote mount wiper motor with self park (12 volt)
- Wiper switch and wiring
- Two wiper spindles with changeable splined knurl ends and o-ring body seals
- 1.8m outer tubing supplied in 2 different styles as two separate long lengths to cut length or shorter connecting tube for shorter tube routes
- Two metres of inner worm drive cable
- Instructions



**BEST SELLER!**

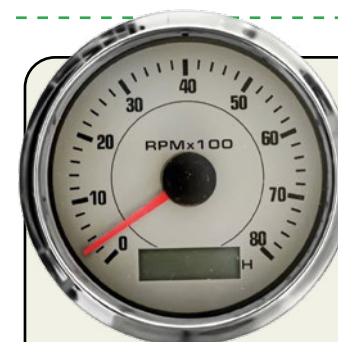
# AIR CONDITIONING KITS & COMPONENTS, PERFORMANCE GAUGES



## ► ARC Performance Gauges

Available with Pulse Generator Programmable or GPS Speedometers! Five or six gauge set w/ colour options white, black or vintage beige face. Hi-beam and indicators built into speedometer, over speed and revs buzzer. Oil pressure and water temp senders included.

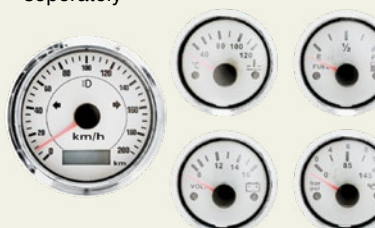
- 3-3/8 inch speed/tach, 2-1/16 inch auxiliary gauges
- Gauges and senders available separately



**3/38 Tachometer, Vintage Beige.**



**Black Dial 6 Gauge Set, Pulse Speedo**



**White Face 5 Gauge Set, GPS Speedo**

**NEW!**



**ARC Classic 6 Gauge Set, Pulse Speedo Charcoal Dial**

## ► Air Conditioning Kits

Each kit includes evaporator unit, control panel & switches with wiring harness, 508 Sanden style engine compressor, all a/c lines and fittings, condenser, receiver/drier, heater water control taps, ducting and dash vents.



**Mini Cooler AC Cool Only, Integrated Style**



**Maxi Cooler AC, Heater & Demister, Integrated Style**

**Mustang Style AC & Heater, Under Dash**



**Slimline AC Heater & Demister, Under Dash**



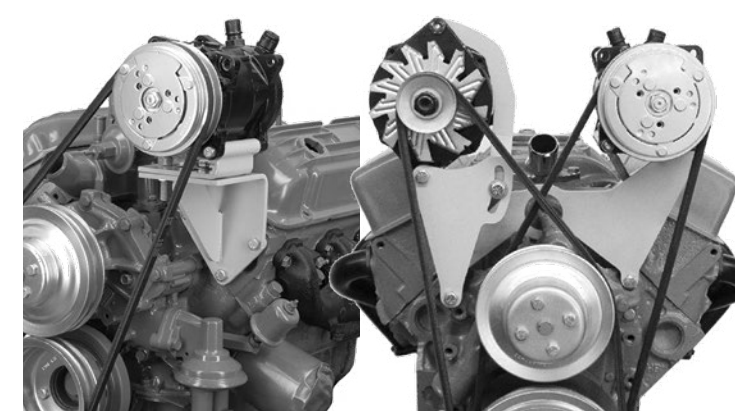
## ▼ Twin Outlet Heater Demister

Universal application to suit hot rods, Ford, Chev, Holden etc.



## ▼ Sanden Brackets and Compressors

- 508 Sanden engine brackets to suit SBC, BBC, Ford Windsor and LS engine.
- 508 Sanden style AC compressors chrome, V-belt or Serpentine.



## ▼ Firewall Fittings

- Billet thru firewall AC and heater fittings, two way and four way, silver or black.





## ENGINE COMPONENTS & ACCESSORIES

### ► Small Block Chev

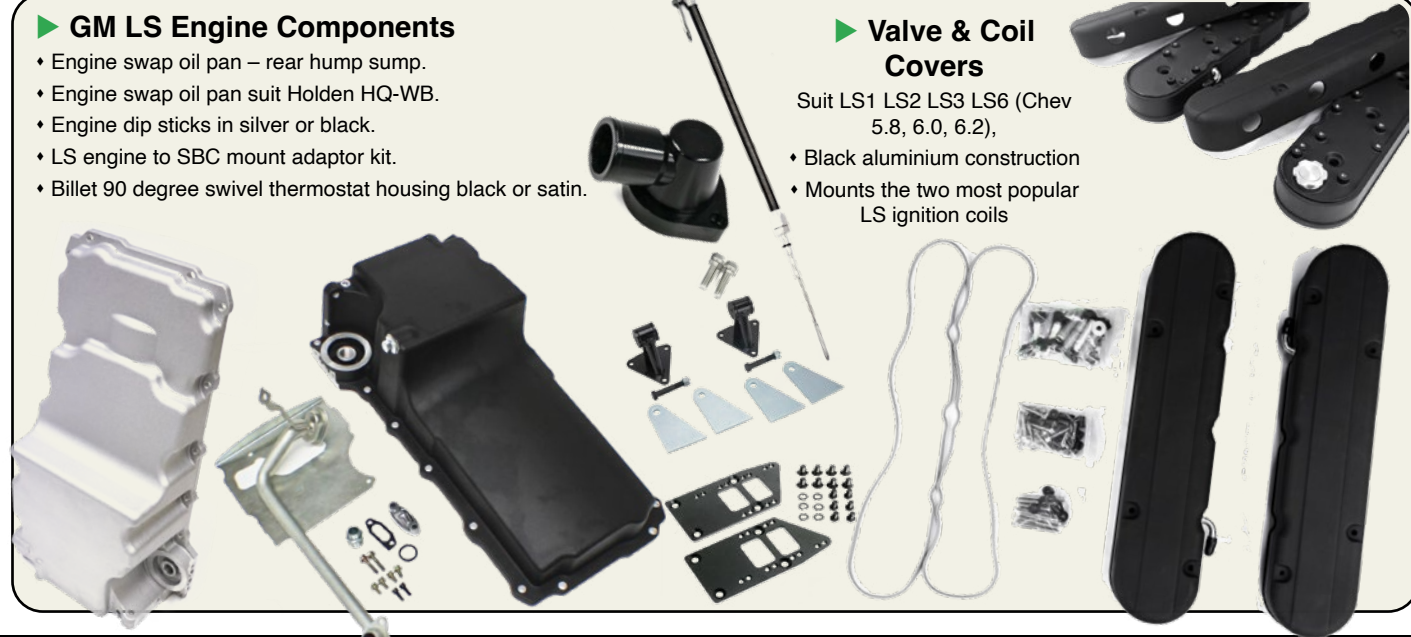
- Street Warrior and Air Gap Dual plane intake manifold in satin or endurashine finish
- Billet engine pulley kits suit short/long water pump in various groove configurations
- Billet Gilmer Drive kits suit short/long water pump.
- Billet thermostat housings 90 swivel suit SBC, BBC
- Complete serpentine engine pulley kit w/ alternator, AC and power steering pump.
- Billet alternator bracket suit SBC short/long water pump.
- Billet Saginaw power steering brackets.
- Electronic distributors HEI, and standard electronic.
- Rocker covers, polished or black powder coat available.
- Alloy water pumps available satin and chrome.
- 3HP Hi-Torque starter motor.
- Oil Pan LH Dip Stick, polished or black powder coat available.
- Engine Dipstick braided stainless, silver or black.
- Alloy timing cover in polished or black.
- Engine mechanical fuel pump.



AUSTRALIAN  
**ROD & Custom**

### ► GM LS Engine Components

- Engine swap oil pan – rear hump sump.
- Engine swap oil pan suit Holden HQ-WB.
- Engine dip sticks in silver or black.
- LS engine to SBC mount adaptor kit.
- Billet 90 degree swivel thermostat housing black or satin.



### ► Valve & Coil Covers

- Suit LS1 LS2 LS3 LS6 (Chev 5.8, 6.0, 6.2),
- Black aluminium construction
- Mounts the two most popular LS ignition coils

## ENGINE COMPONENTS & ACCESSORIES, TRANSMISSION ACCESSORIES

### ► Ford Windsor/Cleveland

- Street Warrior dual plane Intake Manifold for 289/302 and 351 Windsor.
- Billet engine pulley kits in various groove configurations suit Windsor and Cleveland.
- Billet Gilmer Drive Kits Windsor and Cleveland.
- Billet thermostat housings 90 deg swivel suit Windsor.
- Billet Alternator brackets suit 289/302/351W.
- Electronic Distributors HEI suit Windsor.
- Rocker covers – polished or black powder coat.
- Alloy water pumps satin suit 289-302-351W.
- 1.4Kw stator motor and 3HP Hi-Torque starter motor suit Windsor & Cleveland.
- Oil pan, polished suit 289/302W.
- Engine mechanical fuel pump.



### ► Transmission Accessories

- Alloy T350/400/700, 4L60 trans pan in polish or black.
- Chrome C4 pan.
- Trans dip sticks T350/400/700, 4L60, Ford C4, Chrysler 904.
- Stainless kickdown cables T350, 700, Ford C4.
- Engine tubes and transmission crossmembers.



### ► Transmission Mount Floor Shifter

- Suit GM T350, T400, T700, 4L60, and Ford C4.

**NEW!**

### ► Air Cleaners and Accessories

- 14" round and 12"/15" oval alloy full or half finned.
- Caddy style air cleaner.
- Bug catcher style air scoop.
- Hilborn style in single or dual carb.
- Shotgun style air scoop.
- Billet lead separators.
- Alloy breathers polished or black.





# HOT ROD ACCESSORIES, LIGHTING, FUEL TANKS

A U S T R A L I A N  
**ROD & Custom**

## ► Interior and Exterior Accessories

- Washer tanks suit early Holden, Ford and hot rod
- Billet accelerator pedals, brake pedal pads
- Peep mirrors, swan neck mirrors
- Interior mirrors (large and small)
- Stainless braid throttle cable 24" and 36", and throttle cable brake
- Bear claw door latches with fitting kits available, small and large style



## ► Bear Claw Latches

Bear claw door latches with fitting kits available, small and large style.



## ► Lighting

- 7" Tri-Bar headlight lens w/ park light or indicator lens.
- 7" Dietz style head lights available in polished stainless or black.
- 1932 Ford dropped stainless headlight bar.



- 1932 Ford steel grille shell and stainless insert, smooth or original radiator cap, with or without crank hole. Shell and insert available separately.

## ► Engine Cooling

- Stainless radiator hose kits, 24", 36", 48", polished or black.
- Stainless overflow tanks, 10" x 2", 10" x 3", 13" x 2" 15"x2", polished or black.

- Radiators – short hot rod 480mm x 450mm and 1932 Ford standard height.



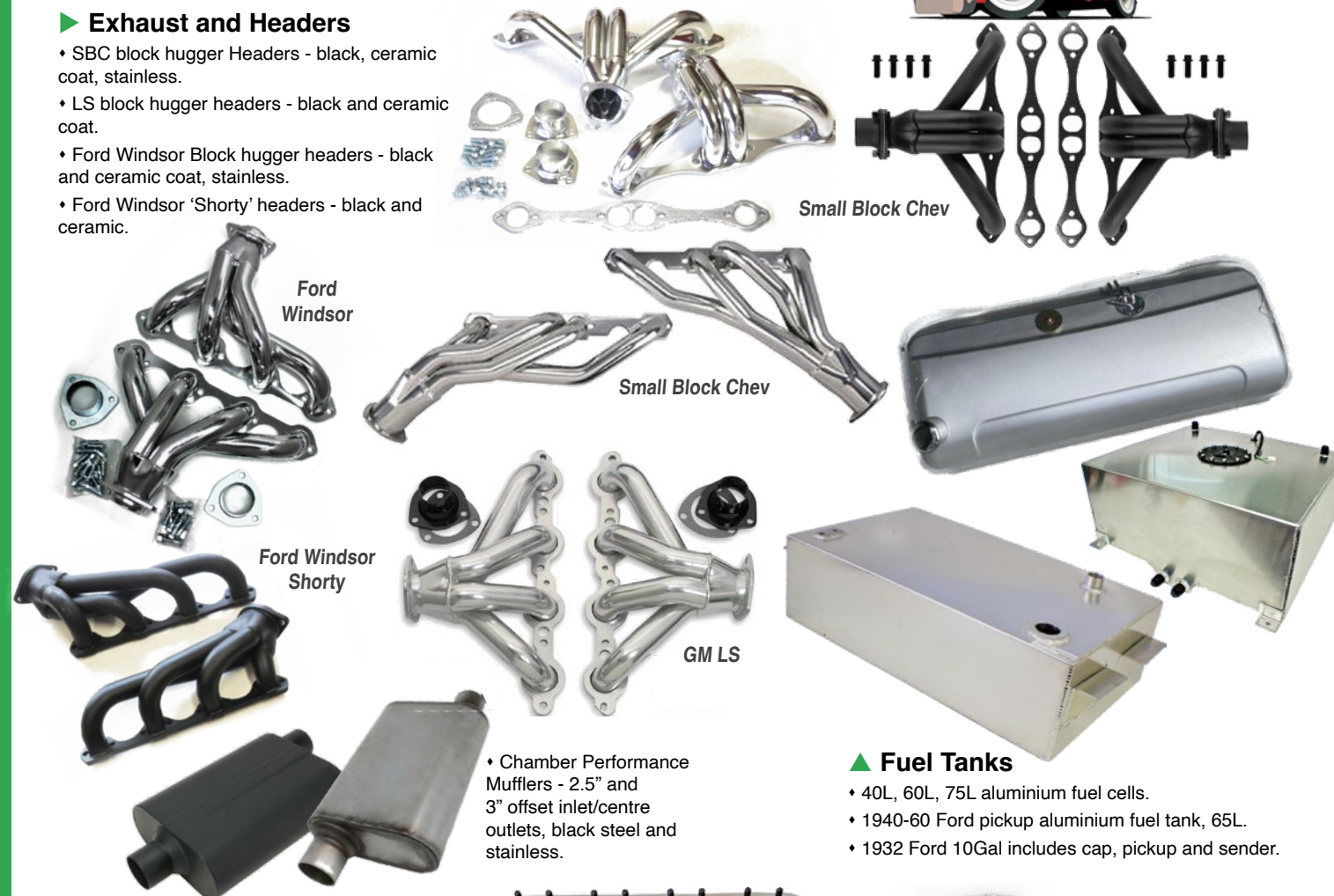
- Thermo fans, 12V curved blade push/pull. Available in 16" 220W/3000cfm and 14" 120W/1900cfm.

# EXHAUST HEADERS, FUEL TANKS, PERFORMANCE CYLINDER HEADS



## ► Exhaust and Headers

- SBC block hugger Headers - black, ceramic coat, stainless.
- LS block hugger headers - black and ceramic coat.
- Ford Windsor Block hugger headers - black and ceramic coat, stainless.
- Ford Windsor 'Shorty' headers - black and ceramic.



- Chamber Performance Mufflers - 2.5" and 3" offset inlet/centre outlets, black steel and stainless.

## ► Fuel Tanks

- 40L, 60L, 75L aluminium fuel cells.
- 1940-60 Ford pickup aluminium fuel tank, 65L.
- 1932 Ford 10Gal includes cap, pickup and sender.



## ARC Performance Aluminium Heads

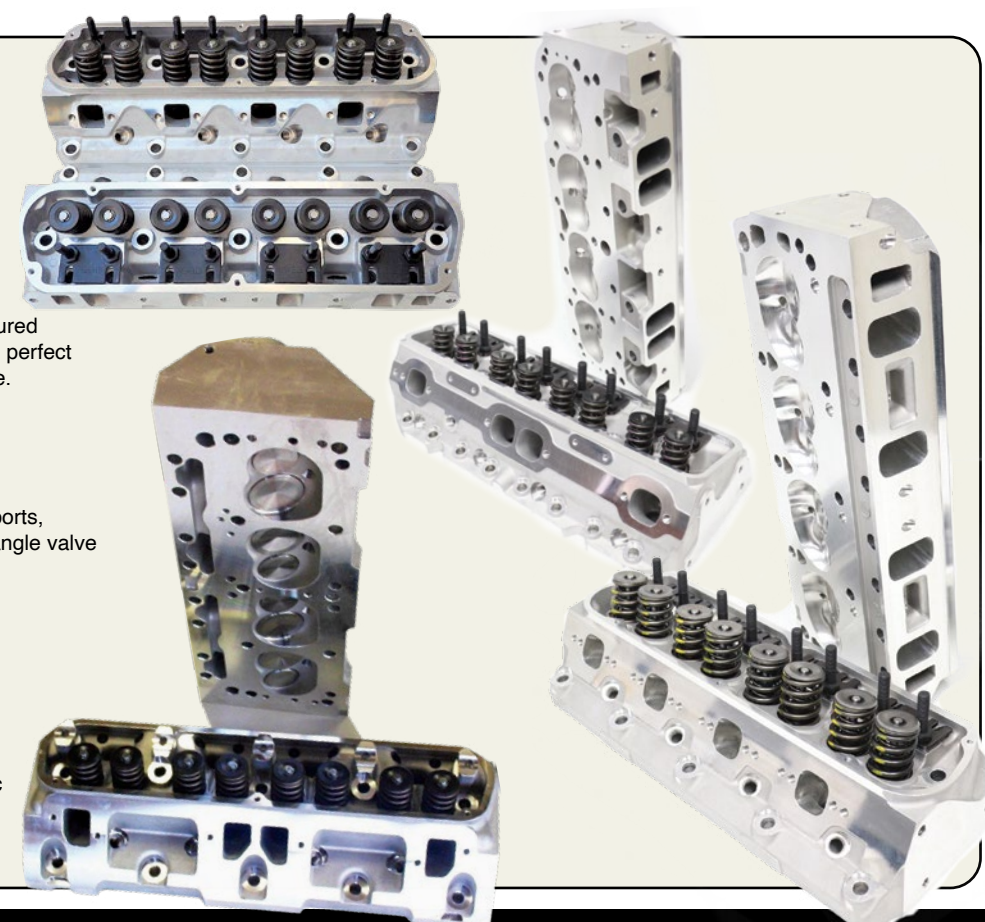
**STREET RANGE:** 'As cast' ports, manufactured from A356 aluminium with 3-angle valve job, perfect for mild street engines, view full specs online.

- Ford 289/302/351 Windsor, 170cc runner.
- SBC, 180cc intake runner.
- Small Block Chrysler, 176cc intake runner.

**STREET PERFORMER RANGE:** 'As cast' ports, manufactured from A356 aluminium with 5-angle valve job, increased flow, view full specs online.

- Ford 289/302/351 Windsor, 185cc runner.
- SBC, 195cc intake runner.

- **CNC PORTED COMPETITION:** 100% CNC ported intake, exhaust and chambers, manufactured from A356 aluminium with 5-angle valve job, view full specs online.
- Ford 289/302/351 Windsor, 185cc & 205cc intake runner.
- SBC, 210cc intake runner.





# HOT ROD CHASSIS KITS & COMPONENTS, APPAREL, GIFT VOUCHERS



## ◀ ARC Parallel Four Link Kit w/ Panhard Bar

Available plain steel or polished stainless.

## ◀ Model A Ford Chassis Rail Kit

Reproduction stamped rails, front and centre crossmembers, boxing plates and body mounts.

## ▶ ARC Triangulated Four Link Kit

Available plain steel or polished stainless.

## ▼ '32 Ford Stamped Chassis Rail Kit

Reproduction chassis rails, front crossmember and boxing plates. K-Frame kits available too.



ENGINEER APPROVED  
AUSTRALIA WIDE  
WITH REPORT



## ▲ Australian Rod & Custom Gift Certificate

For that guy that has everything,  
but still needs more!

## ▼ Australian Rod & Custom Street Wear

- Caps - ARC Snapback, Check Out My 9-Inch!
- T-Shirts - Roadster, '34 Ford, Falcon, GTS Monaro, Ford F100m, Chevy 3100, XY+HQ Racing and many more!



ENGINEER APPROVED  
AUSTRALIA WIDE  
WITH REPORT



We're working with Australian engineers to certify our steering and suspension components.



Ongoing investment in our range of high performance gauges and quality parts!



You'll also find our most popular products listed on eBay



Proud parts supplier to hot rod and custom shops nationwide!



Check out our website for sale and clearance items!